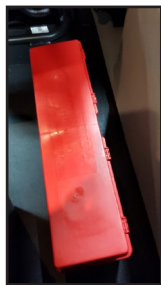




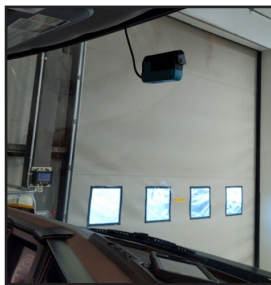
Medium-Duty Pricing Menu



Triangle Install



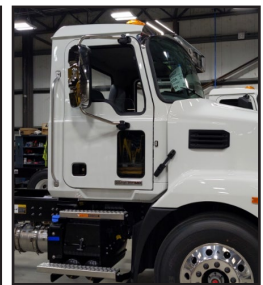
Lytx Drive Cam Install



Camera: Fwd & Int Views - Safety Vision



Visor: Sun - Exterior: Stainless Steel



CAB

OPTIONS

DESCRIPTION

STARTING PRICE

OPTIONS	DESCRIPTION	STARTING PRICE
FLEET DECAL/GRAPHICS PACKAGES	No Wraps	Contact Us
TRIANGLE KIT	Provide and Install Triangle Kit	\$100
MOBILEYE 8 – COLLISION WARNING SYSTEM	Provide and Install Mobileye 8 (Headway Monitoring & Warning, Lane Departure Warning, Pedestrian Collision Warning, Speed Limit Indication)	\$1,195
LYTX DRIVE CAM	Installation of Customer Supplied LYTX Drive Cam	\$205
CAMERA: FWD AND INT VIEWS, SAMSARA - C/S	Installation of Customer Supplied Samsara Telematics/Camera System	\$195
CAMERA: REAR VIEW, SAFETY VISION	Provide and Install Camera System	\$1,225
DRIVER SEAT LIMITED RECLINE	Increases recline from -2 degrees – 15 degrees to 6 – 23 degrees, with a total of 17 degrees.	\$165
AIR PASSENGER SEAT	Provide and Install Passenger Air Ride Seat w/ Seat Belt	\$975
VISOR: SUN, MACK, EXTERIOR, STAINLESS STEEL	Provide and Install Stainless Steel Sun Visor	\$1,280
VISOR: SUN, MACK, EXTERIOR, FIBERGLASS	Provide and Install Painted Fiberglass Sun Visor	\$1,085
MIRROR: VELVAC, DUAL VIEW, 8.5"	Provide and Install LH And RH Hood Mirrors	\$425
MIRROR: DUAL TRIPOD SS	Provide and Install LH And RH Hood Mirrors	\$395
HORN: AIR, ROOF MOUNT, MACK MD	Provide and Install (2) Roof Mounted Air Horns	\$725



Visor: Sun - Exterior: Fiberglass



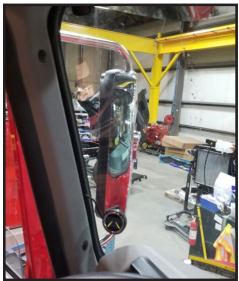
Mirror: Velvac, Dual View 8.5"



Mirror: Dual Tripod SS



Horn: Air, Roof Mount Mack MD



Mobile Eye System



Chassis Electrical Auxiliary Connection



Chassis Air Dryer Relocation



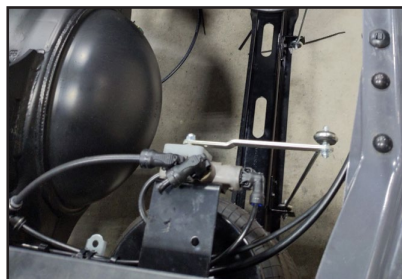
Drain: Oil, RPM Cummins 5.9 B-Series

CHASSIS

OPTIONS	DESCRIPTION	STARTING PRICE
CHASSIS ELECTRICAL AUXILIARY CONNECTION <i>(Must Have Body Builder Wiring Prep)</i>	Provide and Install 3 Dash Aux Switches, 3 Circuits to Junction Box Under Cab on Frame Rail	\$610
EX-GUARD (100, 125, 175 Silver Or Black Models)	Provide and Install Grille Guard	\$1,850
SCALES: REAR SUS, AIR WEIGH, AW5817	Air Weigh Loadmaxx Truck Scale Kit, AW5817 w/ Deflection Sensor	\$3,355
CHOCK BLOCKS: PAIR, RUBBER	Provide and Install One Pair of Rubber Check Blocks	\$45
CHASSIS TOOLBOX: ALUMINIUM	Provide and Install Frame Rail Mounted	\$925
FIRE EXTINGUISHER (10 lbs)	Provide and Install Frame Rail Mounted	\$225
FIRE EXTINGUISHER (5 lbs)	Provide And Install Frame or Cab Mounted	\$185
AIR DRYER RELOCATION	Relocate OEM Air Drier for Larger PTO Clearance	\$360
FUEL FILTER RELOCATION <i>(Must Specify OEM Filter Make/Model)</i>	Relocate Fuel/Water Separator	\$675
DUAL REAR SUSPENSION LEVELING VALVES	Relocation of OEM Valve to Allow Independent Valves to Control Rear Axle Height (Right & Left)	\$725
END OF FRAME TRAILER CONNECTION <i>(Electric Only)</i>	Provide and Install Trailer 7way	\$470
END OF FRAME TRAILER ELECTRIC w/ BRAKE CONTROLLER	Provide and Install Trailer 7way w/ Brake Controller	\$625



Chassis Fuel Filter Relocation



Chassis Dual Rear Suspension Leveling Valves



End of Frame Trailer Air/Electric



CHASSIS continued

OPTIONS	DESCRIPTION	STARTING PRICE
END OF FRAME TRAILER AIR/ELECTRIC	Provide and Install Trailer A&E w/ Hand Control	\$2,485
ROLLOFF: 20FT, 20K, GALFAB - OR 20156s054	20k Outside Rail Single Axle Hoist	Contact Us
ROLLOFF: HOOKLIFT	Hiab, Palfinger, etc.	Contact Us
WHEEL BASE: SHORTEN, AIR	Shorten Wheelbase (Relocate Axle Only) Single Axle	\$1,550
WHEEL BASE: SHORTEN, SPRING	Shorten Wheelbase (Relocate Axle Only) Single Axle	\$1,550
WHEEL BASE: SHORTEN, SPRING/AIR OUTSIDE OF OEM RANGE	Shorten Wheelbase (Relocate Axle Only) Including Steering Components and Axle Shims	Contact Us

PROGRAMMING

PTO: RELAY, CUMMINS, REMOTE	Connection FF Cummins ECU to VECU For Communication	\$260
CONTROLS: ECM, REPROGRAM	Customer Supplied Parameters	\$75

MISC

PDI - MACK, MD	Billed to Mack Warranty System	Contact Us
FEDERAL DOT INSPECTION		\$55
LED HEAD AND TAILLIGHTS	Provide and Install LED Lights	\$775
DRAIN: OIL, RPM, CUMMINS 5.9, B SERIES	RPM Oil Drain Kit for Cummins 5.9/6.7 B-Series Engines	\$455



Chassis RollOff: 20ft, 20k, GALFAB



Chassis RollOff: Hooklift



To request pricing from Fontaine on options you do not see published, visit <https://www.fontainemodification.com/mack-medium-duty-options>.

Pricing for reference only and subject to change without notice, please confirm pricing with your Fontaine Modification Account Manager before placing any new orders.

Travis Leonard, Sr. Sales Engineer
 (276)-233-7822
 Travis.Leonard@fontainemod.com
 Salem, VA/Dublin, VA

